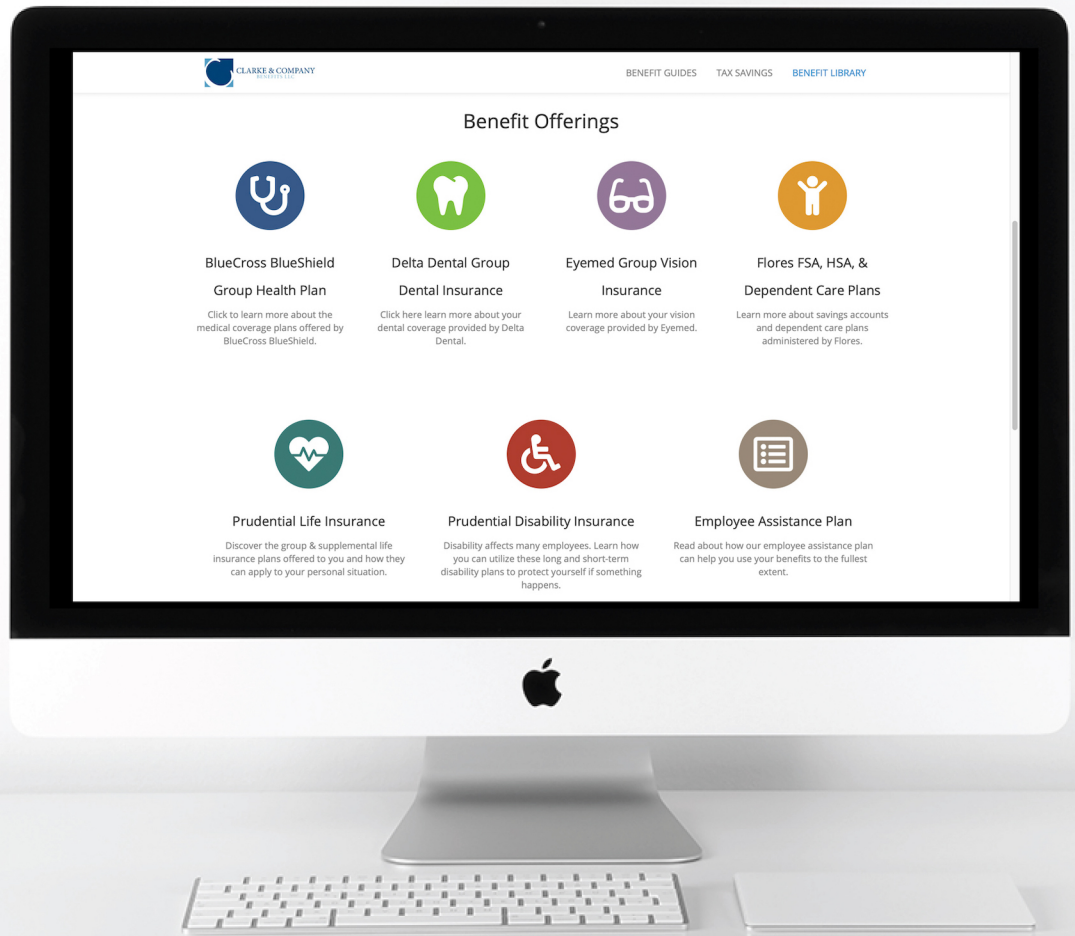


Communication Guide



CLARKE & COMPANY
BENEFITS LLC





Online Guide

An online benefit guide available online 24/7 for your employees. Our video guide in the benefits library explains every plan you offer your employees. New hires and existing employees can learn about their benefits anytime and anyplace.



Health Savings Account

Health Savings Accounts are a great way to save money and be proactive when electing the High Deductible Health Plan.

[HSA VIDEO](#)



Flexible Spending Account

Flexible Spending Accounts allow you to contribute to a spending account and reserve money for IRS approved medical expenses.

[FSA VIDEO](#)



Dependent Care Assistance Plan

Dependent Care Assistance Plans help you pay for daycare, after-school care, summer day camps, and elder care.

[DCAP VIDEO](#)

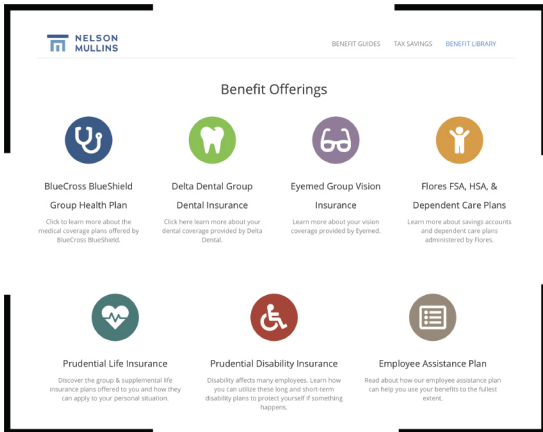
Video Guides & Videos

Instructional videos for plans, terminology and how to take advantage of tax savings. We also can design and build custom videos to promote your benefits and announce open enrollment. More people are using video, shouldn't you be communicating your benefit plan with video?



Plan Comparison Tool

Employees not sure about which plan to choose? We have a calculator for that. Not sure if an HSA or FSA is right for them, we have a calculator for that too. Tools available 24/7 online to help your employees see the savings for their situation. All available 24/7.



Benefit Library

A place where your employees can go to find out more about benefits you offer. Tools, benefit highlight sheets, calculators, certificates and more. All located in one convenient place to your benefit website. Ready to be linked to employees and new hires.



Podcasts

Available 24/7 to help your employees understand their benefits. An in-depth podcast on each of the benefit plans you offer.



Benefits 101

A website devoted to benefit plans and terminology. Most employees don't understand their benefits package or the terminology that comes with it. We make it easy for employees to learn what they need for each plan available.



Form Library

Need a form? They're all here in one place. You can find claim forms, Flex and Dependent Care forms, and others that you may need.



CONNECT WITH US

COLUMBIA OFFICE

Phone: 803.253.6997

Toll Free: 888.540.9403

2422 Devine St. Suite B

Columbia, SC 29205

P.O. Box 5672

OTHER OFFICES

Greenville: 864.232.6723

Charleston: 843.203.9690

Florence: 843.662.1500

[NEWSLETTER SIGN-UP](#)

[SEND US A MESSAGE](#)